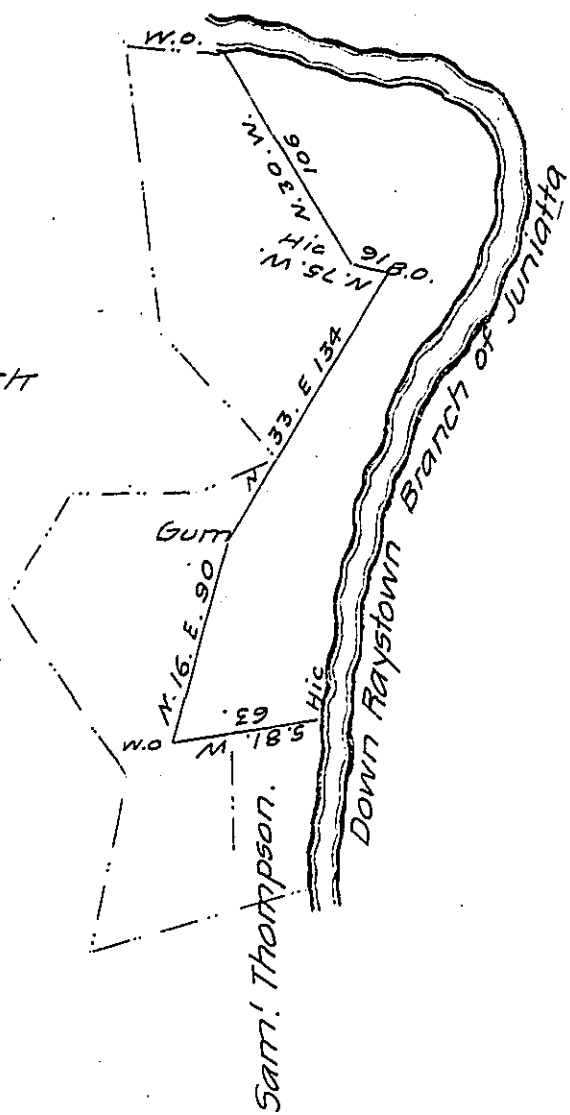


Courses & distances up
the River from Wo. to Hict

- S. 79. E. 43.
- N. 83. E. 10
- S. 45. E. 22
- S. 12. E. 28
- S. 22. W. 79
- S. 18 1/4 W. 89
- S. 9. W. 82



Situate on the West Side of the Raystown Branch of
Juniatta-in Hopewell township, Huntingdon County, Con-
taining seventy and three fourth acres and allowance of six
per cent. Surveyed for John Wilson on order No. 5016 dated
31st day May 1768. Daniel Africa D.S.

To Jacob Spangler Esqr. S. G.

The dotted and river lines represent the draught of a tract
of land surveyed for Gershon Lambert on Warrant dated the
15th March 1816. This survey interferes seventy acres and
three fourth acres with the John Wilson tract. John Wilson con-
veyed to Abraham Sells, who conveyed to William Enyard, who
sold to Gershon Lambert from whom the same was sold
to the Pt. Directors & Co of the Huntingdon Bank who now own
the same. G. Lambert. Pat'd.

IN TESTIMONY that the above is a copy of the original remaining on file in
the Department of Internal Affairs of Pennsylvania, made
conformably to an Act of Assembly approved the 16th day of
February, 1833, I have hereunto set my Hand and caused
the Seal of said Department to be affixed at Harrisburg,
this fifteenth day of July 1908.

Henry Horvath
Secretary of Internal Affairs.